



Most Advanced Proven Solution for the Container Handling Industry

Realtime Business Solutions

TOPO



TOPO – The Terminal Foundation System

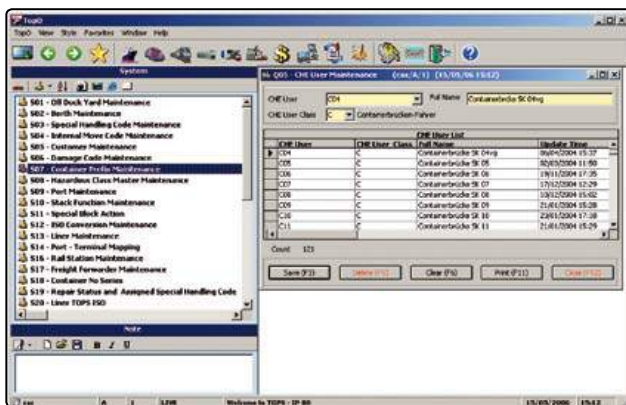
Within TOPS Advanced the TOPO package is the terminal foundation system. TOPO is based on a .NET architecture connecting a smart client to an SQL based database. Usually terminals use Oracle databases for implementations. Based on the local setup a terminal can run multiple instances or sites on one TOPO database.

It supplies the terminal with all possibilities to automatically receive and manually manipulate information. All information is shared within the whole TOPS package between TOPO and TOPX. All TOPS modules are totally integrated in TOPS to support a seamless operation process at the terminal from

the foundation module to the graphical system. The TOPO system has an easy to use and intuitive GUI that is very well known by users of MS Windows. It supplies many standard Windows features and more – such as exporting every list from the system on-the-fly to Excel or HTML.

Beside the main application the TOPO solution comes with two outside modules:

- TOPO EDI Server – dealing with all in-/outbound EDI traffic
- TOPO Report Server – handling all scheduled reporting from the system



TOPO Foundation

General Features

- Security access control
- System reference codes for data validation
- Vessel operation
- Truck gate operation
- Rail operation
- Container operation
- CFS operation
- Equipment operations and statistics
- Vessel/Yard/CFS billing and invoicing
- Reports (standard and customized)
- EDI processing – EDIFACT and customized
- Audit logs
- Online help
- Web terminal view
- Supports multiple languages



Vessel

The vessel operation is totally integrated in TOPS. Prior to a vessels arrival the vessel schedule is created in the foundation system before it is passed to the graphical system.

The graphical system processes the vessel in real-time while the foundation system has many functions for processing vessels and operational history.

Container

The TOPS system records all the standard industry container details. Container details can be re-advised by EDI such as BAPLIE, discharge lists, load lists, bookings and also entered on TOPS online screens. There are many screens available for the processing of container details such as changing a container's number, stuffing, stripping, recording the inspection of a container, monitoring reefers, processing 'Stops' (holds), processing release orders and many more.

Gate/Truck

The Gate/Truck operation is totally integrated in TOPS. Trucks are processed at the gate for receipt, delivery and transit containers. Truck visits may be scheduled by truck bookings or they may be random. Receipt of full containers may be pre-advised by bookings and containers may be delivered based on release orders. All truck processing at the gate, in the yard and at the outgate is time-stamped.

Various screens display trucks currently in the yard and historical and statistical details of truck visits.

CFS

The CFS system is totally integrated with the terminal operation. It processes the receipt of export cargo, the planning of cargo to be stuffed into single or multiple containers, it records the stuffing of the cargo into the actual container and the movement of the containers from the CFS to the export stacks. It records the movement of import LCL container to the CFS where they are stripped and the cargo stacked in the CFS before delivery. Multiple reports are available and billing of the CFS activity is also an optional feature.

S: B44 - THC Calculation (06/A/13) (20/02/06 11:16)

TPC Code Imp: YESP021W Change Yes. Using Standard Rates Start Vol: 27.44
 TPC Code Exp: YESP022E Change Yes. Using Volume Rates Start Vol: 150
 End Work To: 10/06/2006 13:07 Vessel Liner: ACL Departure To: SC 1

Activity	Liner	Len	Clas No	Arr By	Arr Car	Dep By	Dep Car	I/E	F/EO	Has	Ref	FL	Icon	YRate	X
10	FSCU742219	V	YESP021W	T	C	C	E	N	N	N	N	N		689	
20	EAMU237462	V	YESP021W	R	D1			F	Y	N	Y	N		676	
20	EAMU391890	V	YESP021W	T	CA01			E	N	N	N	N		688	
20	EAMU448030	V	YESP021W	C	EAMU448030			E	N	N	N	N		685	
20	EAMU450230	V	YESP021W	R	D3			E	N	N	N	N		690	
20	EPSU1622629	V	YESP021W	P	CHANGESTA1			E	N	N	N	N		694	
20	CRUJ1670630	V	YESP021W					E	N	N	N	N		680	
20	CRUJ1675774	V	YESP021W					E	N	N	N	N		698	
20	FSCU3061751	V	YESP021W					E	N	N	N	N		682	
20	FSCU3517330	V	YESP021W					E	N	N	N	N		699	
20	FSCU3517893	V	YESP021W	T	101			E	N	N	N	N		691	
20	FSCU7477231	V	YESP021W					F	N	Y	N	N		672	
20	GATL80366421	V	YESP021W					F	N	N	N	N		671	
20	GLDU0304165	V	YESP021W					E	N	N	N	N		679	
20	MSU22310981	V	YESP021W	C	ACCU000000			E	N	N	N	N		663	
20	MSU22314077	V	YESP021W					F	N	N	N	N		670	
20	MSU22320763	V	YESP021W					F	N	N	N	N		674	
20	MSU22320623	V	YESP021W	T	STUFF			E	N	N	N	N		678	
20	MSU22331300	V	YESP021W					F	N	N	N	N		677	
20	MSU22360782	V	YESP021W					F	N	N	N	N		684	
20	MSU22362693	V	YESP021W	T	CA01			E	N	N	N	N		669	
20	MSU22314395	V	YESP021W					D	N	N	N	N		686	
20	MSU22375008	V	YESP021W					E	N	N	N	N		681	
20	ODLU0278115	V	YESP021W	T	CA01			E	N	N	N	N		697	
20	TGHU2749314	V	YESP021W	C	TGHU2749314			E	N	N	N	N		683	
20	TGHU2749340	V	YESP021W	T	CA01			E	N	N	N	N		687	

Load: LD Discharge: DL 29 Reuse Cut: RC 15 Refuse Yard: RY 1 Tranship Load: TL
 Container move on this vessel BUT NOT Arrival or Departure vessel.

THC Enquiry (F12) Ship Est/Cal (F4) THC Summary (F9) PrintList (F11) Close (F10)
 THC Calculate (F10) THC Report (F5) THC Details (F10)

Vessel activity enquiry

T01 - Container Inquiry (CTR/CTH) (06/A/13) (24/02/06 10:58)

Truck Detail: Driver ID: JAV13, Carrier Cd: APL35, Truck Event No: 005

Container List: RIB Container No: 12001110, Area: 20, Len: 8.0, Height: 2.00, F/E: 0, Weight: 17000, Slot: 3, Door: 0

Truck Status: Not Processed

Appointment No: []

RECEIVE: F/E: [], Clor No: ACN04001110, Bkg No: 2020, Liner: APL, Gross Wt (kg): 17,000, Tare Wt (kg): 4,000, Cargo Wt (kg): 13,000, Max Gross (kg): 40,000

DELIVERY: CMC: [], Category: [], Slot No: [], Door Dr: [], Type: [], Orig ISO: 4291, ISO: 4291, Len (ft): 40, Height (ft): 8.6

NOT: Reefer: [], Seal: [], Damage: [], Restrict Part: [], Special Hdg: [], Customs: [], Trailer: []

Internal Ref: [], ECN: [], Gross Instruction For Empty: []

Discrepancy Report: []

Save (F2) Delete (F3) Clear (F4) Clear All (F5) Print Container Details Letter (F12) Print Invoice Label (Fresh Truck) (F11) Close (F10)

Gate/truck operation



Billing

The billing system is integrated with the TOPS terminal operation and calculates container yard activity charges, full container storage charges, empty container storage charges, and terminal handling charges and vessel charges. The charges are then consolidated on a periodic basis or by vessel and passed on to a third party financial system for invoicing. It supports multiple currencies.

Rail

Prior to a train's arrival the train consist is received and processed in the foundation system before it is passed to the graphical system where the planning of the unloading is carried out. Following the planning, the actual unloading of the train is carried out using the wireless system.

Outbound trains are also processed in both the foundation and graphical systems.

EDI Server

Processes 'In-house' EDI message formats or EDIFACT formats. The standard set of EDIFACT messages is delivered with the TOPO EDI Server. 'In-house' EDI message formats received from external parties are mapped to the TOPS system. Messages sent to external parties are mapped from the TOPS system to the format that the customer has contracted to receive.

Report Server

The report server supplies the possibility to use the TOPS standard reports or plug-in new own reports developed in Crystal report. The report server handles all the scheduled reporting for the terminal such as weekly inventory report.

Web Solution

Provides access to the TOPS system information for authorized customers by internet access. It also provides real-time updating of bookings and trucking appointments, enquiry on vessel schedules, bookings, release orders, container details, truck details etc. Customers may also access online reports which can be output in various formats.

Train No: 81003 ETD: 23/12/2004 11:50

Container No: CAX2524812 Orig ISO: 22G1 Received Ts: 18/07/2005 17:57
 Release No: LARAMAR ISO: 22G1 Received Load Plan:
 Liner: MAR Len (ft): 20 Moved to Wagon:
 F/E: F Height (ft): 8.6
 Planned Loc: Type: GP
 Current Loc: HD1 Tare: 3 Gross: 3

Container Load List

Conf	Container No.	Current Loc	Plan Loc	ISO	Type	Length	Height	F/E	Tare
<input checked="" type="checkbox"/>	ACLU2143309	SSS		4200	GP	40	8.6	F	2.0
<input checked="" type="checkbox"/>	APHU6013090	HD1		4500	GP	40	9.6	F	4.0
<input checked="" type="checkbox"/>	CAX2524812	HD1		22G1	GP	20	8.6	F	2.0
<input checked="" type="checkbox"/>	HXLU6004200	ON TRAIN		4200	GP	40	8.6	F	3.0
<input checked="" type="checkbox"/>	JAN04112005	COMMUNITY		2200	GP	20	8.6	F	2.0
<input checked="" type="checkbox"/>	PONU7214530	COMMUNITY		4500	GP	40	9.6	F	2.0
<input checked="" type="checkbox"/>	PYLU2804007	HD1		22G1	GP	20	8.6	F	2.0
<input checked="" type="checkbox"/>	THAL03110051	COMMUNITY		2076	TD	20	8.0	F	2.0
<input checked="" type="checkbox"/>	VTGU1231235	01 01 01		22G1	GP	20	8.6	F	2.0
<input checked="" type="checkbox"/>	XX28801	COMMUNITY		1HHH	GP	20	8.6	E	2.0

Count: 13 Container Errors: Confirmed

Buttons: Enquiry (F2), Delete (F5), Select And Confirm All (F8), Close (F12), Clear (F6), Print (F11)

Train information

TOPO - EDI Server

INBOUND

- FTP In
- EDIFACT FTP In
- Split Files
- Movements/Show/Hide
- Badly Structured
- Coprar - Discharge
- Coprar - Load
- Coprar - Hold
- Copras/Booking
- Copras/Release
- BallCr - BallCr
- Copras/Track/AVISIN
- Track - Truck/AVISOUT
- Voyage - VessSched

Financial Interface

- Get IFS Response Setup
- Process IFS Response

OUTBOUND

- FTP Out
- EDIFACT FTP Out
- CtrlMove - ShowPlan
- CtrlMove - LoadPlan
- CtrlMove - Discharge
- CtrlMove - Release
- CtrlMove - GateIn
- CtrlMove - GateOut
- CtrlMove - I/Move
- CtrlMove - Release/ID
- CtrlMove - Shuttle
- CtrlMove - Strip/Log
- BallCr - BallCr
- Track - Erase/Status
- Voyage - VessDep
- Voyage - VessSched
- IBMS
- Financial Interface
- Send To IFS Setup
- EDIFACT
- COMBO
- CODECO

Coprar - Discharge

Local IP: 192.168.18.25 Date/Time: 23/02/2006 16:21
 Local Path: D:\11\top0_APM\EDI_Server_Euro\CTB\Inbound\CtrlMove
 Frequency/Minutes: (Click on the Caption to Set Frequency)
 Automatic Delete Log Files After number of days:
 Run View Log Files

Coprar - Load

Local IP: 192.168.18.25 Date/Time: 23/02/2006 16:21
 Local Path: D:\11\top0_APM\EDI_Server_Euro\CTB\Inbound\CtrlMove
 Frequency/Minutes: (Click on the Caption to Set Frequency)
 Automatic Delete Log Files After number of days:
 Run View Log Files

Windows Taskbar: Welcome to CAS & PBS 23/02/2006 16:22

TOPO EDI server

Realtime Business Solutions Pty. Ltd.

sales@rbs-tops.com

www.rbs-tops.com

RBS EMEA UG

sales@rbs-emea.com

www.rbs-emea.com

